



**NEW ZEALAND FAITH
COMMUNITY NURSES
ASSOCIATION NEWSLETTER**

MAY 2005

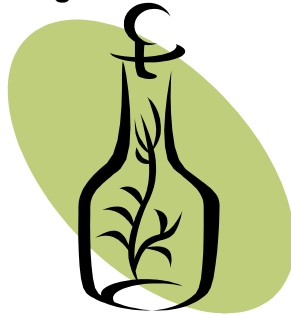
365 Trafalgar St
Nelson

P.O. Box 64
Kaiapoi

The Chairman writes:

The past few months have been quite a journey for the Tyrrell family and activities relating to parish nursing have had to take a back seat but I thank the Board members who have faithfully continued with the work of NZFCNA especially the preparation for the Conference in September which will be a fantastic opportunity to network, share ideas and learn much more about this ministry. So please think and pray seriously whether you can be there. It could be a valuable inclusion in your portfolio as evidence of professional development in this area of nursing. Please consider too whether you might offer to stand for the Board at the AGM, taking place during the conference.

**'FRESH BALM for FUTURE PRACTICE
CHRISTIAN NURSES ON THE FRONTIER'
'Wai hou rongoa wairua e mahi a mua'**



Plan to be there- 26th – 29th September 2005

An inspiring programme featuring-

Dr Anne van Loon from AFCNA Australia

Other exciting and challenging speakers.

Training sessions

Spiritual inspiration

***Contact Diane Webster, Secretary at contact details
above for application form and further information.***

Chairperson

Elaine F Tyrrell
The Deanery
365 Trafalgar Street
Nelson
Tel/fax: 03 548 8574
Email: etyrrell@xtra.co.nz

Secretary/Treasurer

Diane Webster
P.O. Box 64
Kaiapoi
Tel: 03 312 2430
Fax: 03 312 2431
Email:
cgwebster@xtra.co.nz

Newsletter:

Dorothy Finlay
7/117 Otumoetai Road,
Tauranga 3001
Ph. (07) 5701218
Email:
dfinlay@paradise.net.nz

**PRAY FOR
CONFERENCE.**

WATCH THIS SPACE!!

We are pleased to announce the development of our NZFCNA WEB SITE which is now UP AND RUNNING ...see it at: -

www.faithnursing.co.nz

You can check Conference details as they are planned and we thank Diane for getting this launched.

Editor's News:-

Let us continue to pray for Elaine and husband Charles following his recent CIA, which initially left him with right-sided paralysis.

Elaine shares with us that Charles is now progressing well. After a month in hospital in Christchurch, Charles has had 6 weeks in Nelson Hospital, in the same ward where Elaine is working.

Praise God that Charles is now able to walk with a stick, move his right arm from his shoulder, and is starting to move his right fingers. Let us continue to pray for him and that the Lord will give sustaining grace and strength to Elaine and the family.

CONTINUE TO PRAY FOR EACH OTHER

- **Anne van Loon** -preparation for the September NZFCNA conference in Waikanae.
- **Elaine & Charles and family** – full restoration to health and strength. Elaine for wisdom and strength to meet all the extra commitments that come her way with Charles incapacitated.
- **Our colleagues in all avenues of Faith Community Nursing**, for courage, strength and grace for each day
- For the decisions of **the Board and** for the selection of **new Board members at the AGM in Wellington in September.**
- **For the power of the Holy Spirit to others through Faith Community Nursing**

Great work Diane!



Wendy Scott sent this interesting article about a paediatric nurse Kirsty Henderson and some valuable mission work she had undertaken in Fiji late last year.....

Kirsty's love of paediatrics led her to take up an opportunity to work in St. Christopher's Home for children just outside Suva.

There were roughly 40 children ranging from the ages of 2 ½ to 18 years of age. Most were young girls.

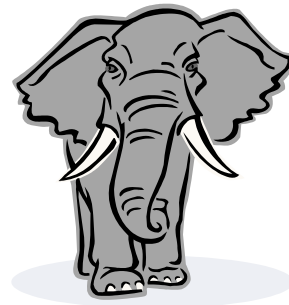
The purpose of the home was to show the children that there was a future for them in their society and much emphasis was placed on education and morning and evening devotional studies.

**Kirsty set up a dispensary and provided basic health assessments within the home. Kirsty found it humbling working alongside nuns and lay people. Through this time she was able to contribute to that valuable work and learnt a lot about God's work. Wendy Scott
RN.BN.PGD**

REMINDER:

If you are a member of NZFCNA please remember to update your membership. Only paid up members can vote at the AGM. If you are not a member please consider this as a means of keeping this association growing and supporting the faith community nurse ministry. Apply to Diane for a membership form.

***DON'T FORGET
TO SEND DIANE YOUR MEMBERSHIP
FEES***



On the lighter side of parish nursing: another angle on mammograms:

GO GET YOUR MAMMIES GRAMMED!

For years and years they told me,
Be careful of your breasts.
Don't ever squeeze or bruise them,
And give them monthly tests.
So I heeded all their warnings,
And protected them by law.
Guarded them very carefully,
And I always wore my bra.

After 30 years of astute care,
My gyno, Dr Pruit
Said I should get a Mammogram
"OK" I said, "I'll do it".

"Stand up here real close" she said,
(She got my boob in line),
"And tell me when it hurts" she said,
"Ah yes! Right there, that's fine".
She stepped upon a pedal,
I could not believe my eyes!
A plastic plate came slamming down,
My hooter's in a vice!

My skin was stretched and mangled,
From underneath my chin
My poor boob was being squashed
To Swedish Pancake thin.
Excruciating pain I felt,
Within its vice-like grip,
A prisoner in this vicious thing,
My poor defenceless tit!

"Take a deep breath" she said to me,
Who does she think she's kidding!?
My chest is mashed in her machine,
And woozy I am getting.
"There, that's good" I heard her say,
(The room was slowly swaying.)
"Now, let's have a go at the other one"
Have mercy I was praying.
It squeezed me from both up and down,



It squeezed me from both sides.
I'll bet SHE'S never had this done
To HER tender little hide.
Next time that they make me do this,
I will request a blindfold.
I have no wish to see again,
My knockers getting steam rolled.

If I had no problem when I came in,
I surely have one now
If there had been a cyst in there,
It would have gone "ker-pow!"
This machine was created by a man,
Of this I have no doubt,
I'd like to stick his balls in there,
And see how THEY come out!

WHO CAN BE A FAITH COMMUNITY NURSE?

Registered Nurse – Can be a full FCN-must have a
current practising Certificate.

Enrolled Nurse - Valuable team member to support
the FCN but unable to carry the title of FCN. For
further information, contact Elaine or attend the
Conference!

Retired, non practising Registered Nurses – associate
FCN's are vital to the networking that is so essential to
the full provision of church based health care
ministries.

We appreciate every team member and look forward to
conference where we will have greater understanding of
all the roles and responsibilities.



WORLD FORUM FOR PARISH NURSES (FCN)

Elaine reported at the last Board meeting that NZFCNA is now linked with the World Forum for Parish Nurses and this means we are linked with USA, Canada, Africa, Australia and UK,

This includes liaising with Parish Nurses throughout the world and setting up international partnerships and exchanges. Future ventures together include:

*Education and Curriculum Development
Consultation and Working groups
Support and Encouragement
Collaborative Research*

All are available to us as we explore the many new areas that Faith Community Nursing opens up. We are also invited as New Zealand representatives to submit regular bi-monthly articles for Parish Nurse Perspectives, which is produced by the International Parish Nurse Resource Centre. Contact Elaine if you would like to participate.

Elaine's first article is enclosed overleaf for your interest:

New Zealand Connection

A seed was planted in Nelson...

The concept of Parish Nursing was first presented to me by a tutor when doing an elective paper in spirituality. Two years later, shortly after my graduation with a Bachelor of Nursing degree, my Bishop commented to me that he could see me working in the community, using my new nursing skills and my previous teaching and lay ministry skills. This thought kept niggling at me, and after a lot of internet research, reading and praying, I returned to suggest to Bishop Derek Eaton, the notion of setting up a parish nurse ministry in the Diocese of Nelson.



Elaine Tyrrell, parish nurse at the trig point marking the literal "Centre of New Zealand", in Nelson where the ministry commenced in the Anglican church of Aotearoa, New Zealand and Polynesia in 1998.

He advised that we attempt a pilot scheme at the Cathedral where my husband (who nursed prior to ordination) was the Dean. We started on the 1st July 1998 and that evening, our own churchwarden called upon our aid!

God, the supreme strategist, chose the city, which is literally at the “Centre of New Zealand” (and has the trig point to prove it!). Visitors passing through the Cathedral whilst on holiday or visiting family saw the Parish Nurse notice board, took the leaflets and got in touch. Enquiries came from throughout the country during the following years and within the Anglican diocese, the promotion of parish nursing spread.

The early days had been lonely, trying to establish the role of parish nursing whilst still appreciating how it could work within the NZ health system. Other health professionals and leaders were rather wary and I had little nursing expertise. A colleague saw some parish nursing material I was printing at the local nursing school and remembered some literature she had received from Australia. The contact was Dr Anne van Loon and at last I had someone who could walk with me in the faith community nursing journey. She was developing the role in Australia and in 2001; I joined two others from NZ at the training course in Adelaide.

I had seen this ministry as fulfilling a local need but God had bigger plans and due to the persistent requests for information and training, the parish nurses within NZ have now formed the New Zealand Faith Community Nurses Association, one function of which is to network with one another.

At our recent training conference in Auckland in August 2004, nurses attended from throughout the country and represented the major Christian denominations and several Pentecostal churches. As I looked around the group when we stood to pray, I began to understand that God had only planted the seed in 1995, and now we have to water it and let it grow and flourish. We are very privileged to join with Parish Nurses from other parts of the world and I hope to relate further aspects of our NZ journey in future editions.

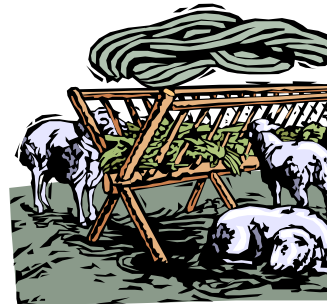
Elaine (Tyrrell)
Chairperson NZFCNA

THE SHEPHERD'S PSALM 23

“The LORD is my Shepherd, I shall not want.
He makes me to lie down in green pastures,
He Leads me, beside the still waters.
He restores my soul.
He leads me in the paths of righteousness for
His own name's sake.
Yea though I walk through the valley of the
shadow of death,
I will fear no evil.
His rod and staff comfort me.
He prepares a table before me in the presence
of my enemies,
He anoints my head with oil, my cup runs over
Surely goodness and mercy shall follow me
All the days of my life
And I will dwell in the house of the Lord,
Forever.”

Snippets from IPNRC Notes also available at
www.parishnurses.org

If you want to subscribe to this Parish Nursing list
then send email to : IPNRC@eden.edu



TEA AND TOAST –A DANGER THAT CAN BE HARD TO SPOT

Recently *The New York Times*, in “**Tea and Toast a danger that can be hard to Spot**” (April 12, 2005) reported on a study published in American Journal of Nursing on Malnutrition among the elderly.

They stated that “20-60 percent of elderly home-care patients are either malnourished or heading in that direction. The problem is worse in nursing homes, where the figure is thought to be more like 85%” On of the biggest contributors to malnutrition among those living at home was isolation.



“When did we see you hungry and feed you?” asked the people of Jesus in the 25th chapter of the Gospel of Matthew.” Whenever you do it to the least of these, you do it to me.” He replied.

Parish nurses, more than any other group of health professionals have the opportunity to ‘see’ the hungry, and to respond. They can ask questions. They can arrange for friendly visitors. They can reduce isolation, check meds to see if loss of appetite is a side-effect, arrange help for depression and they get food to people when needed.

“When did we see you hungry?” The Parish Nurse (FCN) has eyes to see and ears to hear the lonely and lost.

Thanks be to God!

The ‘New York Times recently reported on the on-going debate in the medical world between two symbols; the staff of the mythological Greek healer Ascepius (called the Asklepian which has one snake) and the wand of the Greek god of commerce, Hermes (called caduceus which has two snakes). It is perhaps symbolic of the conflicting forces in healthcare today that the medical world find itself torn between symbols of healing and commerce.

The shepherd's staff (Psalm 23) might be more applicable to the healing arts. In parish nursing, symbols such as Florence Nightingale's lamp and healing hands are prominent

What are the symbols that inform your practice?

“Slithery Medical Symbolism: worm or snake?

One

or Two?”

New York Times March 8th 2005.



#

VINEYARD MINISTRIES has courses available that are NZQA certified.

Check out their website urban@vineyard.co.nz or phone 09 3616077 for enquires. We are looking at the possibility of them developing a paper for FCN. More details to come. They also have a counselling course that they run through Refocussing at Christian City Church in Auckland. Contact details 09 373 5238 Fax 09 373 5233

USEFUL BOOKS

TITLE : ***Spirituality: the heart of nursing***; Ronaldson, Susan,; Melbourne; Ausmed; 1997

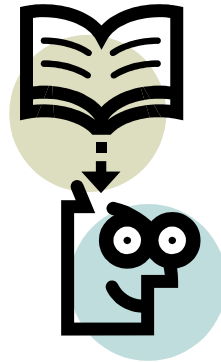
TITLE: ***Making sense of SPIRITUALITY IN NURSING PRACTICE***: an interactive approach; McSherry Wilfred; London; Churchill Livingstone: 2000

TITLE: ***Being Human: ordinariness in nursing***; Taylor, Beverley J; Lismore, N.S.W; Southern Cross University Press: 2000

TITLE: ***Spirituality in Nursing: Standing on holy ground***; Mary Elizabeth O'Brien. Jones & Bartlett. Available from NZNO library

TITLE: ***Sent to heal. A handbook on Christian Healing***. Order of St Luke; Harold Taylor: 1993

TITLE: ***The Parish Nurse Providing a Minister of Health for Your Congregation***. Grammer E. Westberg. Augsburg. 1990.



Australian Courses

A **FCN Self-Care Kit** is available in Australia

Email: daisyrose@eisa.net.au.

Robyn has a Master of Science in Counselling and will be pleased to support you.

GRADUATE DIPLOMA IN THEOLOGY (FAITH COMMUNITY NURSING)

Then contact The General Program Administrator, Luther Seminary, 104 Jeffcott Street,

North Adelaide SA 5006, Ph (08) 8267 7400

Email: general@luthersem.edu.au

This course is highly recommended by AFCNA as an excellent grounding in theology and its practical application in the FCN role



Useful web sites – to access Parish Nursing Information

- www.afcna.org.au Australian Faith Community Nurses Association.
- <http://ipnrc.parishnurses.org/index.phtml> International Parish Nurse Resource Center in St Louis
- <http://www.healthministriesassociation.org> Health Ministries Association.
- www.moh.govt.nz/nursing.html Ministry of Health specific to nursing and provides links to publications, nursing education etc. You could check out the Primary Health Care Strategy via this site if you are not familiar with it.
- www.medicineandstory.com Brian Broom, a Christian doctor working in Christchurch has developed this site. He spoke at our first FCN conference in 2001.

The Gambling Watch website

Click on <http://www.gamblingwatch.org.nz/index.asp?>

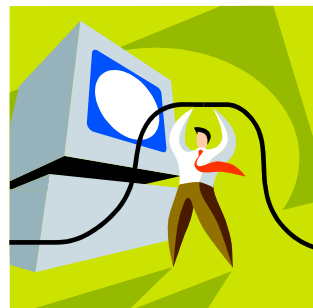
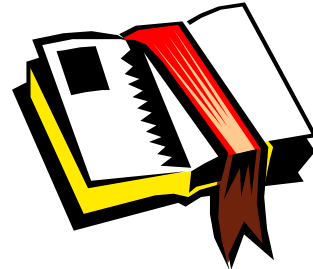
NEWSLETTER.... IMPORTANT NOTICE:

This is your Newsletter!

Please send us any articles, useful websites, poems, prayers, comments or news, which we could include in future newsletters.

STOP PRESS

- Please prayerfully consider whether you can be a member of the new NZFCNA Board and stand for election at AGM in September – Elaine and Wendy will be standing down for personal reasons.
- Please pray for Pauline French, Parish Nurse at St Paul's Cathedral, Dunedin as she speaks at the National Enrolled Nurses Conference in Dunedin this week
- Further speakers confirmed for conference include Prof Elaine Wainwright and Revd Wyatt Butcher



--	--